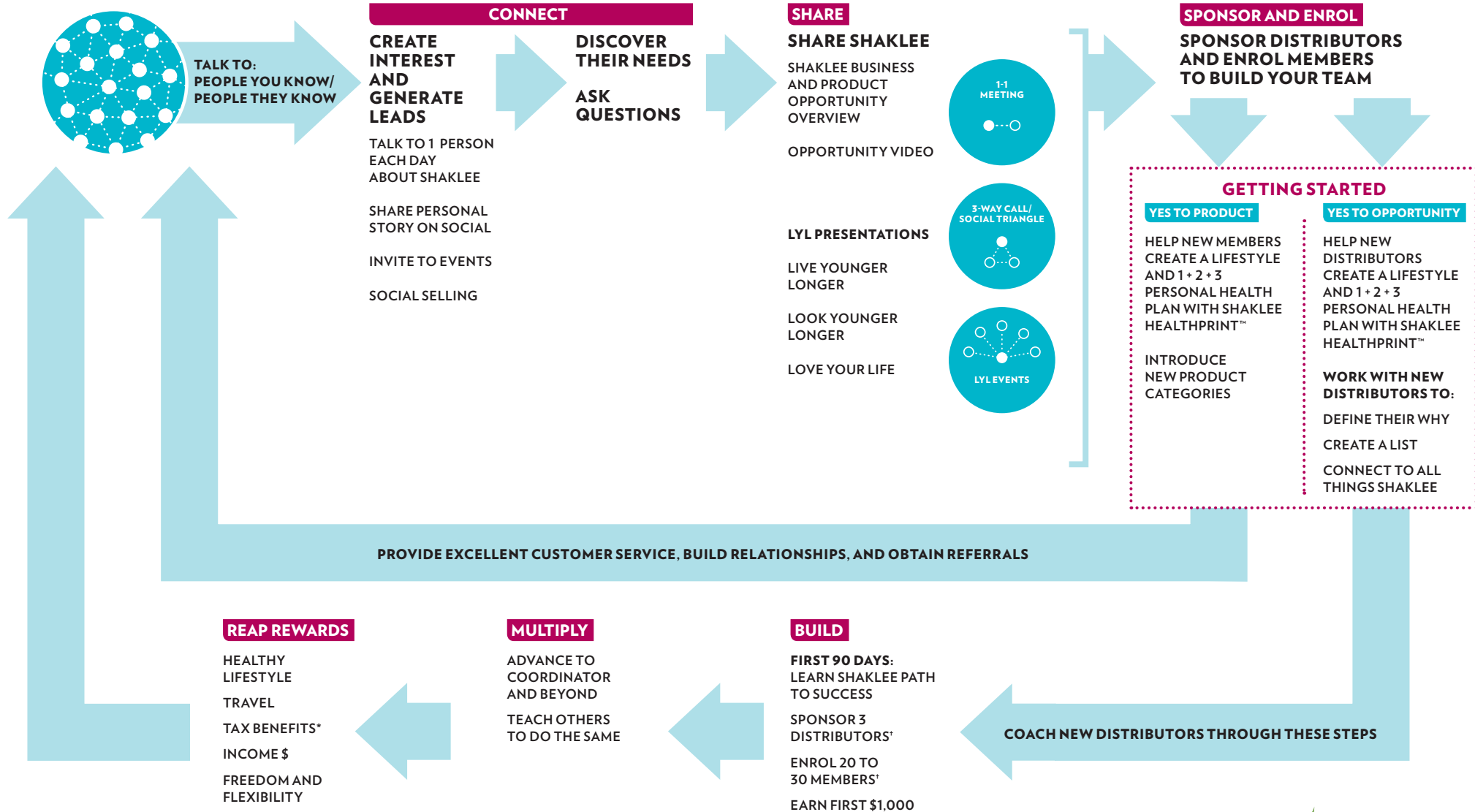


Shaklee Path to Success

INTERACTIVE PATH AVAILABLE ONLINE:
EVENTS.SHAKLEE.COM/PATH-TO-SUCCESS

START WITH A BIG WHY



The typical participant in the Shaklee Canada Inc. Compensation Plan earns an average of \$265.42 per year, according to 2017 figures. However, participants at the Business Leader level earn on average \$10,556 a year and can earn over \$190,655 a year at the top levels. Earnings were calculated on a monthly basis of those Business Leaders in the achieved rank. Results will vary with effort. Shaklee Canada Inc. does not guarantee that any particular income level will be achieved. For any rank where no Distributors held that rank in one or more months, the figures for that rank have been annualized. *Potential tax benefits. Consult your tax adviser. †Sponsor new Distributors and enrol new Members with purchase.

